



Driving standards of construction

Great news for all Meridian residents – construction of Sofra Road is now complete, including new operational traffic lights at the intersection.

Brown Property Group took over management of this project to ensure it was delivered promptly and to a high standard. We're delighted to have achieved this milestone for our community!

The Sofra Road works are part of a broader upgrade to local infrastructure that's already improving traffic flow, reducing travel times, and enhancing connectivity across Clyde North.

With the Bells Road link between Soldiers Road and Thompsons Road also open, families are enjoying easier access to Berwick, Rivercrest Christian College, and the Monash Freeway, as well as more convenient travel to Wulerrp Secondary College, which is now well into its first year of operation.

We look forward to sharing more exciting infrastructure updates with you soon!

MERIDIAN

Meet Nabil – Meridian's New Estate Manager!

We're thrilled to welcome Nabil Harb to the Meridian Clyde North community as our new Estate Manager. With over 18 years of experience in the real estate industry, Nabil brings a wealth of knowledge, professionalism, and a genuine passion for helping people through every stage of their homeownership journey.

Nabil specialises in land sales and masterplanned communities, and is here to assist new purchasers in finding their dream lot, guide them through the buying and building process, and support them well into the post-sale journey. Whether it's navigating land selection, understanding timelines, or settling into your new home, Nabil is committed to making the experience as smooth and enjoyable as possible.

He also plays an important role in supporting existing residents, answering questions and helping foster a strong, connected community at Meridian.

Based at the Meridian Sales Office, Nabil is your go-to contact for all things land and lifestyle.

Keep an eye out for Nabil at community events or when visiting the sales office – he's always happy to stop for a chat!



MERIDIAN GREEN

Be part of the Meridian Green excitement!

With four stages now titled and a steady stream of homes under construction, Meridian Green is quickly transforming into a vibrant, established community. Each week brings exciting progress, from the arrival of new residents to the rapidly evolving community precinct.

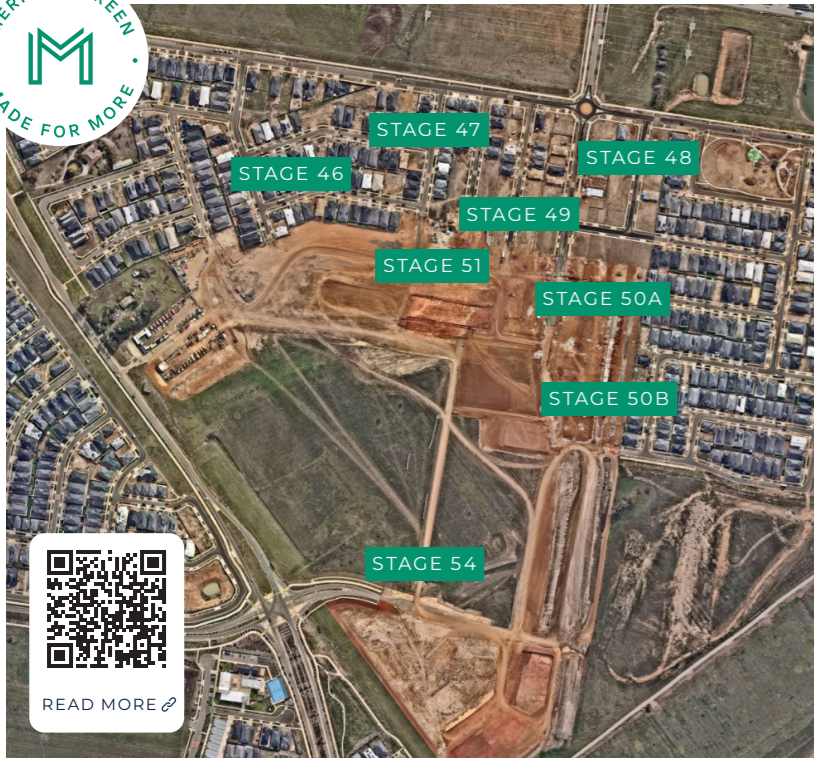
Park-fronted lots are now selling, offering elevated living with sweeping green views and direct access to the future 1.81 hectare Linear Park. It's the perfect setting for families that want space to grow and connect.

Prefer convenience at your doorstep? There are also lots available just a short walk from the future Government Primary School and moments from St Germain Central, Clyde Grammar, and so much more, offering a connected lifestyle of walkable ease.

Whether you're ready to build now or planning to in the future, Meridian Green offers a place to thrive. To learn more, visit the Meridian Land Sales Office or call our friendly team on **1800 463 743**.



VIEW LAND FOR SALE [🔗](#)



Construction Update

Fabulous progress continues across Meridian Green! Multiple stages are moving steadily toward completion and buyers are excitedly preparing for their imminent move.

Stage 49: Officially titled! Owners are buzzing, homes are being built, and the community is really taking shape.

Stage 50A: Kerb installation is complete and the sub-base is in. Next up: electrical works and communications, as well as footpath installation. Titles are anticipated in July!

Stage 50B: Sewer and stormwater works are nearly done, with retaining walls underway. Road boxing and base works are finished, water mains and kerb installation are next. We estimate title registration will happen in September.

Stage 51: Earthworks are complete and sewer installation will soon begin. Drainage and road boxing will follow as construction progresses. Titles are anticipated in December.

We're thrilled to see Meridian Green growing into a vibrant, well-connected neighbourhood — and there's so much more to come!

*Title registration timeframes are indicative only. Subject to weather conditions and authority approvals. Please visit meridianclyde.com.au/construction-portal/ for more information.

The future mixed-use precinct is coming alive!

Businesses that are part of the Mixed-Use Precinct within the Summit Business Park are preparing to start trading!

The breadth of new and convenient amenities in our own backyard will be a welcome addition to our wonderful community, and we can't wait!

GUZMAN Y GOMEZ:
Join them from 7am on Wednesday 18th June for their Grand Opening! Enjoy \$5 burritos all day and a Mariachi band playing from 10am to 9pm.

DAN MURPHY'S:
Come along at 8:30am on Friday 20th June and be part of our Opening Ceremony!

PETBARN:
Shhh... they're opening quietly on Friday 20th June before having Grand Opening the next day, Saturday 21st June.

SUPER CHEAP AUTO:
Opening with a bang on Saturday 21st of June!

JAYCAR:
They're having a soft opening on Friday 20th June, followed by a grand opening on Saturday 21st June.

NIDO CHILDCARE:
Anticipated to open for business early to mid-July. Getting close!



Go Dees!

Brown Property is once again proud to be Major Sponsor of the Casey Demons VFL team.

The 2025 season kicked off on Sunday, 23rd March with a thrilling draw against North Melbourne at Casey Fields. The crowd was large and vocal, with a substantial cohort of excited barrackers from Meridian cheering on the Dees!

With 21 teams vying for a place in the finals it's proving to be a tight season. With 3 wins and a draw to date the Dees are looking for a big finish to push their finals credentials.

Be sure to mark Sunday 20th July on your calendars for the Brown Property Group partner game where the Demons will take on Carlton at Casey Fields! We hope to see you there.



READ MORE



Supporting our local business

THE DENTL STUDIO

65 Matterhorn Dr
Clyde North, VIC 3978
Phone: (03) 7050 3943

We all need to take care of our teeth, and here at Meridian we're fortunate to have an awesome dental surgery right on our doorstep!

On a mission to provide a world-class patient experience that sets a new standard for personalised and innovative dental care, The Dentl Studio offers uncompromising safety and quality.

Whether it's time for your annual check-up and clean, or you'd like a cosmetic procedure such as teeth whitening, or you need a more serious issue resolved, make an appointment with The Dentl Studio.



READ MORE



Meridian Cooks

Roasted Pumpkin & Chickpea Shepherd's Pie

(Vegetarian with optional Halal chicken or fish)

This comforting dish features roasted seasonal vegetables under a golden mashed potato topping. Delicious on its own, or with shredded chicken or flaked white fish.



FOR THE FILLING

- 1 tbsp olive oil
- 1 onion, finely chopped
- 2 garlic cloves, minced
- 1 carrot, diced
- 1 cup pumpkin, peeled & diced
- 1 can chickpeas, drained
- 1 tbsp tomato paste
- 1 tsp dried thyme
- 1 tsp smoked paprika
- 1 cup vegetable stock
- Salt & pepper to taste
- Optional: 1-1½ cups shredded cooked chicken (Halal) or flaked white fish (e.g. barramundi or snapper)

Preheat oven to 200°C. Toss pumpkin in a little oil and roast for 20 mins until tender. In a large pan, sauté onion and garlic until soft. Add carrot and cook for 5 mins. Stir in tomato paste, chickpeas, roasted pumpkin, thyme, paprika, and stock. Simmer for 10-15 mins to thicken. If adding chicken or fish, stir it in and heat through.

FOR THE TOPPING

- 3-4 potatoes, peeled and chopped
- 1 tbsp olive oil or butter
- 1/4 cup milk (or plant-based milk)
- Salt to taste

Boil potatoes, mash with oil/butter, milk and salt. Spoon filling into a baking dish, top with mash, and rough up with a fork. Bake for 20 mins until golden. Serve with steamed greens or a simple salad.

DO YOU HAVE A FAVOURITE RECIPE YOU'D LOVE TO SHARE WITH YOUR COMMUNITY?

Send your recipe to hello@bpg.com.au and it might appear in a future edition of our newsletter!



Resident Information

LANDSCAPE INCENTIVE

In order to be eligible for the landscaping incentive, you must have your front garden, including the driveway, nature strip and side fences completed within 90 days from the date of your Occupancy Permit. Please refer to your Contract of Sale and your Developer Approval drawings for the specific requirements for your lot.

☞ Refer to our **Landscaping Incentive Flyer** for a helpful checklist and more information.

☞ Refer to our **Design Guidelines** before you lodge your application to ensure your designs comply.

SHARED FENCING

All shared fencing should be arranged in collaboration with your neighbour.

☞ Refer to our **Fencing Info Form** for the process.

PERIMETER FENCING

If you aren't planning on building straight away, it is still important to secure your property. Please organise temporary fencing for your property to prevent the dumping of rubbish. It is a costly exercise for you as the home owner if clearing is needed prior to construction.

OPTICOMM

Opticomm provides an alternative to the NBN, by providing fibre right to your home, rather than relying on existing older services.

☞ Refer to our **Opticomm Flyer** on how to connect.

☞ Refer to the **Builders Portal** to download the information mentioned.

HAVE YOU SEEN SOMETHING IN YOUR COMMUNITY THAT DOESN'T LOOK RIGHT?

Help make Meridian a safer, more enjoyable community via the **Snap Send Solve app**, an app which allows you to easily report issues in your neighbourhood.

Whether it's a pothole, damaged property or overgrown vegetation, simply snap a picture, upload it, and it will be sent directly to local authorities for immediate action!

**Snap
Send
Solve**