

MERIDIAN

CLYDE NORTH



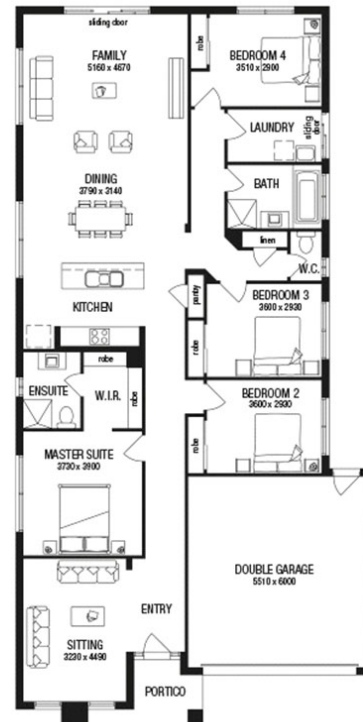
REGAN 24 METRICON \$573,520



LOT: 1652
AREA: 400m²
FRONTAGE: 12.5m

INCLUSIONS LIST

Fixed Site Costs
No more to pay no hidden extras
All your flooring covered throughout the entire home:
Stylish timber laminate floors^ to Entry, Kitchen, Meals and Family; Luxury carpet to your bedrooms and balance of home (excluding wet areas); Quality tiles to bathrooms, ensuite and laundry
Coloured concrete driveway
Remote control garage
Council and Developer guidelines and requirements all taken care of
25 year Structural guarantee#
Our quality assurance program



PACKAGE PRICE MAY VARY DUE TO ACTUAL LAND AVAILABILITY. BUILDERS RESERVES THE RIGHT TO CHANGE PRICES WITHOUT NOTICE. FIXED PRICE PACKAGE ARE SUBJECT TO THE DEVELOPER'S DESIGN REVIEW PANEL'S FINAL APPROVAL. EVERY PRECAUTION HAS BEEN TAKEN TO ESTABLISH THE ACCURACY OF THE MATERIAL HEREIN. PROSPECTIVE BUYERS SHOULD MAKE THEIR OWN ENQUIRIES TO SATISFY THEMSELVES ON ALL ASPECTS. ARTISTS IMPRESSIONS ONLY. EFFECTIVE AS AT 15/4/16