

WARNING
BEWARE OF UNDERGROUND SERVICES

THE LOCATIONS OF UNDERGROUND SERVICES ARE APPROXIMATE ONLY AND THEIR EXACT POSITION SHOULD BE PROVEN ON SITE. NO GUARANTEE IS GIVEN THAT ALL EXISTING SERVICES ARE SHOWN.

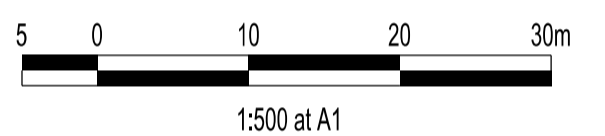
STOP

Major Cables exist in the area, if your activities are within Telstra encroachment distances (see duty of care) contact 03 9632 9961 at least 2 business days before starting activity.

WARNING
OVERHEAD POWER LINES

LEGEND

- FOOTPATH
- VEHICULAR CROSSOVER
- ROAD PAVEMENT, KERB AND CHANNEL
- ELECTRICITY TELECOMMUNICATION CONDUITS (REFER TO APPROVED ELECTRICAL AND COMMS PLAN)
- GAS DRINKING WATER NON DRINKING WATER CONDUITS
- ELECTRICITY MAIN
- TELECOMMUNICATION MAIN
- GAS MAIN
- DRINKING WATER MAIN
- NON DRINKING WATER MAIN
- SEWER MAIN, MAINTENANCE STRUCTURES AND SEWER PROPERTY BRANCHES
- PROPOSED DRAINAGE, PIT, HOUSE DRAIN AND PROPERTY INLET
- EXISTING DRAINAGE AND PIT AND FUTURE DRAINAGE AND PIT
- MELBOURNE WATER SCHEME DRAINAGE AND PIT (COUNCIL ASSET)
- MELBOURNE WATER SCHEME DRAINAGE AND PIT (MELBOURNE WATER ASSET)
- DRAINAGE PIT NUMBER
- PROPOSED CUT AREAS
- PROPOSED FILL AREAS
- E00.00 EXISTING SURFACE LEVEL
- D00.00 DESIGN SURFACE LEVEL
- B00.00 TOP OF BATTER LEVEL
- P00.00 PADS LEVEL
- #T STREET NAME SIGN
- LOT SLOPE DIRECTION
- PERMANENT SURVEY MARK
- TEMPORARY BENCH MARK
- RETAINING WALLS
- KERB TRANSITION
- OVERLAND FLOW PATH
- PASSIVE IRRIGATION GRAVEL TRENCH



VERSION DETAILS:

REV	DATE	DESCRIPTION	STATUS
A	25/07/2023	PRELIMINARY PLANS	PRELIMINARY

FILENAME: P:1669\1669_48\E12 - Design\6 - DGN\1669-48_R05.dgn

DRAWN: C.BAXTER DATE: MAY 2023 SCALE: AS SHOWN

DESIGNED: J.POTGIETER DATE: MAY 2023 DATE PRINTED: 25/07/2023

AUTHORISED: T.SMITH DATE: MAY 2023



SUITE 1, LEVEL 1, 84 MT ELIZA WAY, MT ELIZA VIC 3930
www.charltondegg.com.au

COUNCIL: CITY OF CASEY

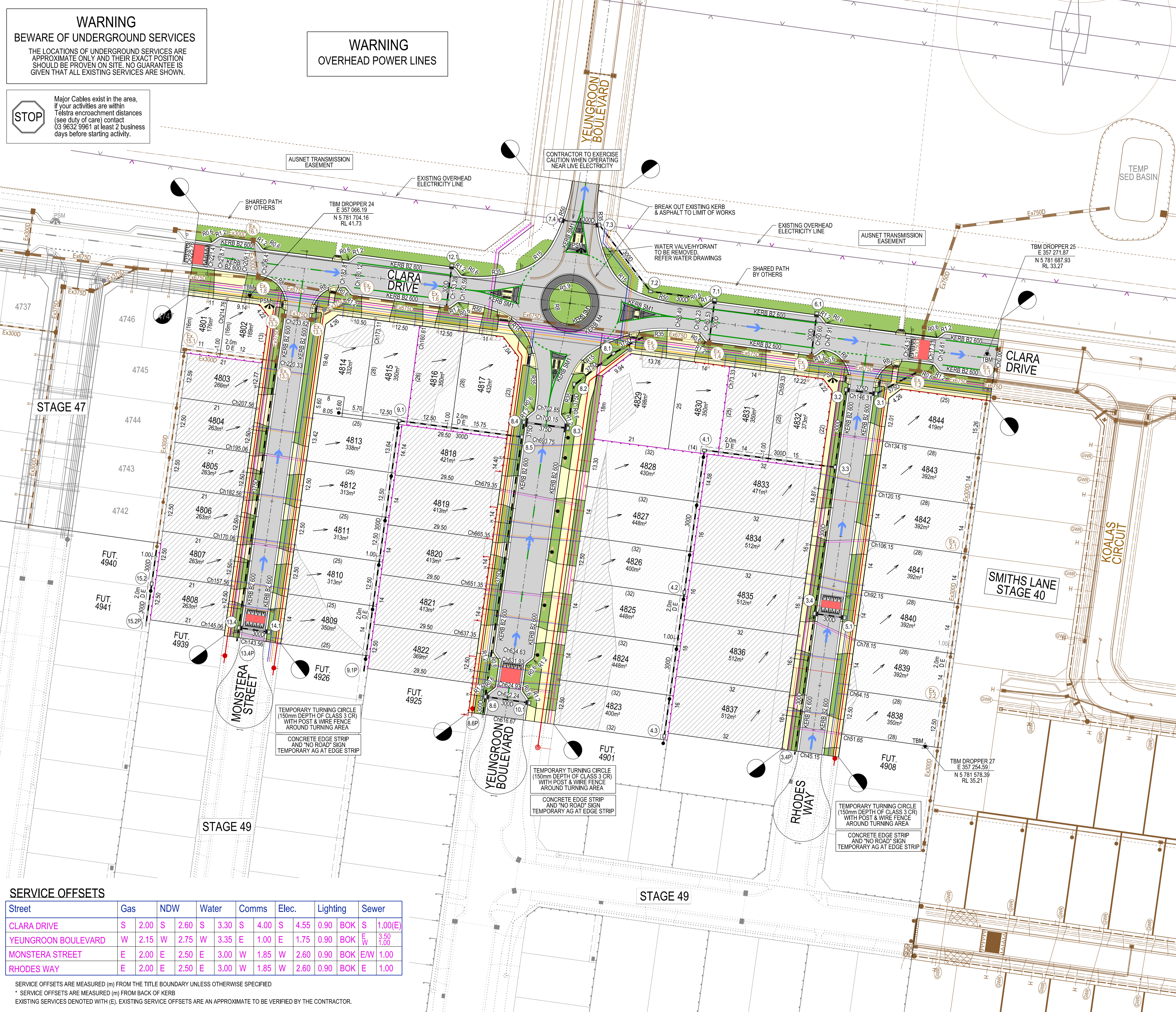
TITLE: BROWN PROPERTY GROUP
MERIDIAN GREEN - STAGE 48
1525 POUND ROAD - CLYDE NORTH
ROAD AND DRAINAGE PLANS
DETAIL PLAN & SERVICE OFFSET TABLE

DRG NO. 1669_48/R05 REV. A SHEET 05 OF 35

SERVICE OFFSETS

Street	Gas	NDW	Water	Comms	Elec.	Lighting	Sewer
CLARA DRIVE	S 2.00	S 2.60	S 3.30	S 4.00	S 4.55	0.90 BOK	S 1.00(E)
YEUNGROON BOULEVARD	W 2.15	W 2.75	W 3.35	E 1.00	E 1.75	0.90 BOK	E _W 3.50 1.00
MONSTERA STREET	E 2.00	E 2.50	E 3.00	W 1.85	W 2.60	0.90 BOK	E/W 1.00
RHODES WAY	E 2.00	E 2.50	E 3.00	W 1.85	W 2.60	0.90 BOK	E 1.00

SERVICE OFFSETS ARE MEASURED (m) FROM THE TITLE BOUNDARY UNLESS OTHERWISE SPECIFIED
* SERVICE OFFSETS ARE MEASURED (m) FROM BACK OF KERB
EXISTING SERVICES DENOTED WITH (E), EXISTING SERVICE OFFSETS ARE AN APPROXIMATE TO BE VERIFIED BY THE CONTRACTOR.



WARNING
BEWARE OF UNDERGROUND SERVICES

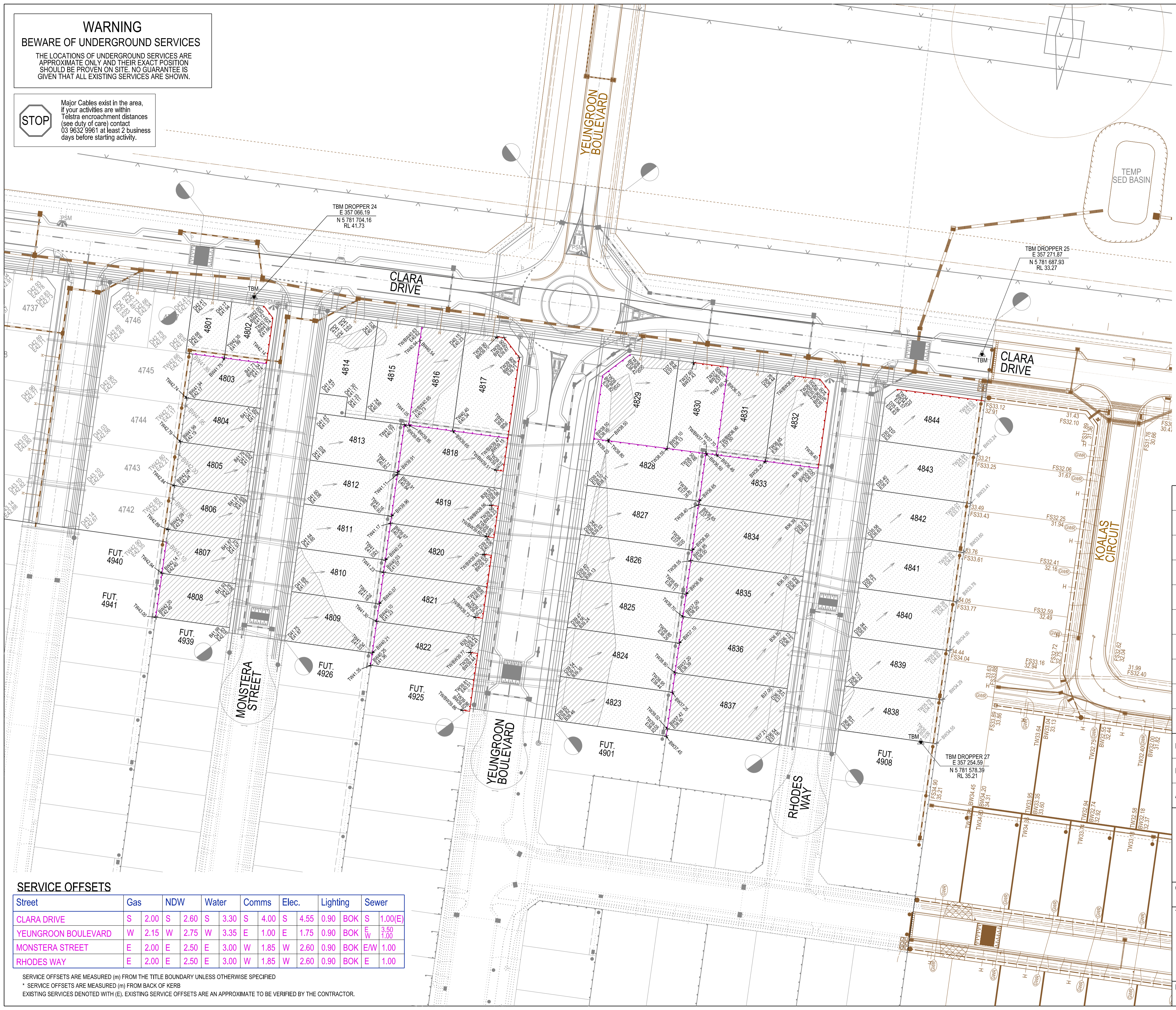
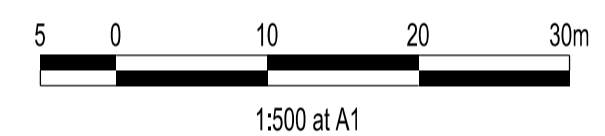
THE LOCATIONS OF UNDERGROUND SERVICES ARE APPROXIMATE ONLY AND THEIR EXACT POSITION SHOULD BE PROVEN ON SITE. NO GUARANTEE IS GIVEN THAT ALL EXISTING SERVICES ARE SHOWN.

STOP

Major Cables exist in the area, if your activities are within Telstra encroachment distances (see duty of care) contact 03 9632 9961 at least 2 business days before starting activity.

LEGEND

- FOOTPATH
- VEHICULAR CROSSOVER
- ROAD PAVEMENT, KERB AND CHANNEL
- ELECTRICITY TELECOMMUNICATION CONDUITS (REFER TO APPROVED ELECTRICAL AND COMMS PLAN)
- GAS DRINKING WATER NON DRINKING WATER CONDUITS
- ELECTRICITY MAIN
- TELECOMMUNICATION MAIN
- GAS MAIN
- DRINKING WATER MAIN
- NON DRINKING WATER MAIN
- SEWER MAIN, MAINTENANCE STRUCTURES AND SEWER PROPERTY BRANCHES
- PROPOSED DRAINAGE, PIT, HOUSE DRAIN AND PROPERTY INLET
- EXISTING DRAINAGE AND PIT AND FUTURE DRAINAGE AND PIT
- MELBOURNE WATER SCHEME DRAINAGE AND PIT (COUNCIL ASSET)
- MELBOURNE WATER SCHEME DRAINAGE AND PIT (MELBOURNE WATER ASSET)
- DRAINAGE PIT NUMBER
- PROPOSED CUT AREAS
- PROPOSED FILL AREAS
- EXISTING SURFACE LEVEL
- DESIGN SURFACE LEVEL
- TOP OF BATTER LEVEL
- PADS LEVEL
- STREET NAME SIGN
- LOT SLOPE DIRECTION
- PERMANENT SURVEY MARK
- TEMPORARY BENCH MARK
- RETAINING WALLS
- KERB TRANSITION
- OVERLAND FLOW PATH
- PASSIVE IRRIGATION GRAVEL TRENCH



VERSION DETAILS:

REV	DATE	DESCRIPTION	STATUS
A	25/07/2023	PRELIMINARY PLANS	PRELIMINARY

FILENAME: P:\1669\1669_48\E12 - Design\6 - DGN\1669-48_R06.dgn

DRAWN: C.BAXTER	DATE: MAY 2023	SCALE: AS SHOWN
DESIGNED: J.POTGIETER	DATE: MAY 2023	DATE PRINTED: 25/07/2023
AUTHORISED: T.SMITH	DATE: MAY 2023	

SERVICE OFFSETS

Street	Gas	NDW	Water	Comms	Elec.	Lighting	Sewer
CLARA DRIVE	S 2.00	S 2.60	S 3.30	S 4.00	S 4.55	0.90 BOK	S 1.00(E)
YEUNGROON BOULEVARD	W 2.15	W 2.75	W 3.35	E 1.00	E 1.75	0.90 BOK	E 3.50 W 1.00
MONSTERA STREET	E 2.00	E 2.50	E 3.00	W 1.85	W 2.60	0.90 BOK	E/W 1.00
RHODES WAY	E 2.00	E 2.50	E 3.00	W 1.85	W 2.60	0.90 BOK	E 1.00

SERVICE OFFSETS ARE MEASURED (m) FROM THE TITLE BOUNDARY UNLESS OTHERWISE SPECIFIED
 * SERVICE OFFSETS ARE MEASURED (m) FROM BACK OF KERB
 EXISTING SERVICES DENOTED WITH (E), EXISTING SERVICE OFFSETS ARE AN APPROXIMATE TO BE VERIFIED BY THE CONTRACTOR.

CHARLTON DEGG
LAND DEVELOPMENT CONSULTANTS

SUITE 1, LEVEL 1, 84 MT ELIZA WAY, MT ELIZA VIC 3930
www.charltondegg.com.au

COUNCIL: CITY OF CASEY

TITLE: BROWN PROPERTY GROUP
MERIDIAN GREEN - STAGE 48
1525 POUND ROAD - CLYDE NORTH
ROAD AND DRAINAGE PLANS
DETAIL PLAN - LOT LEVELS